
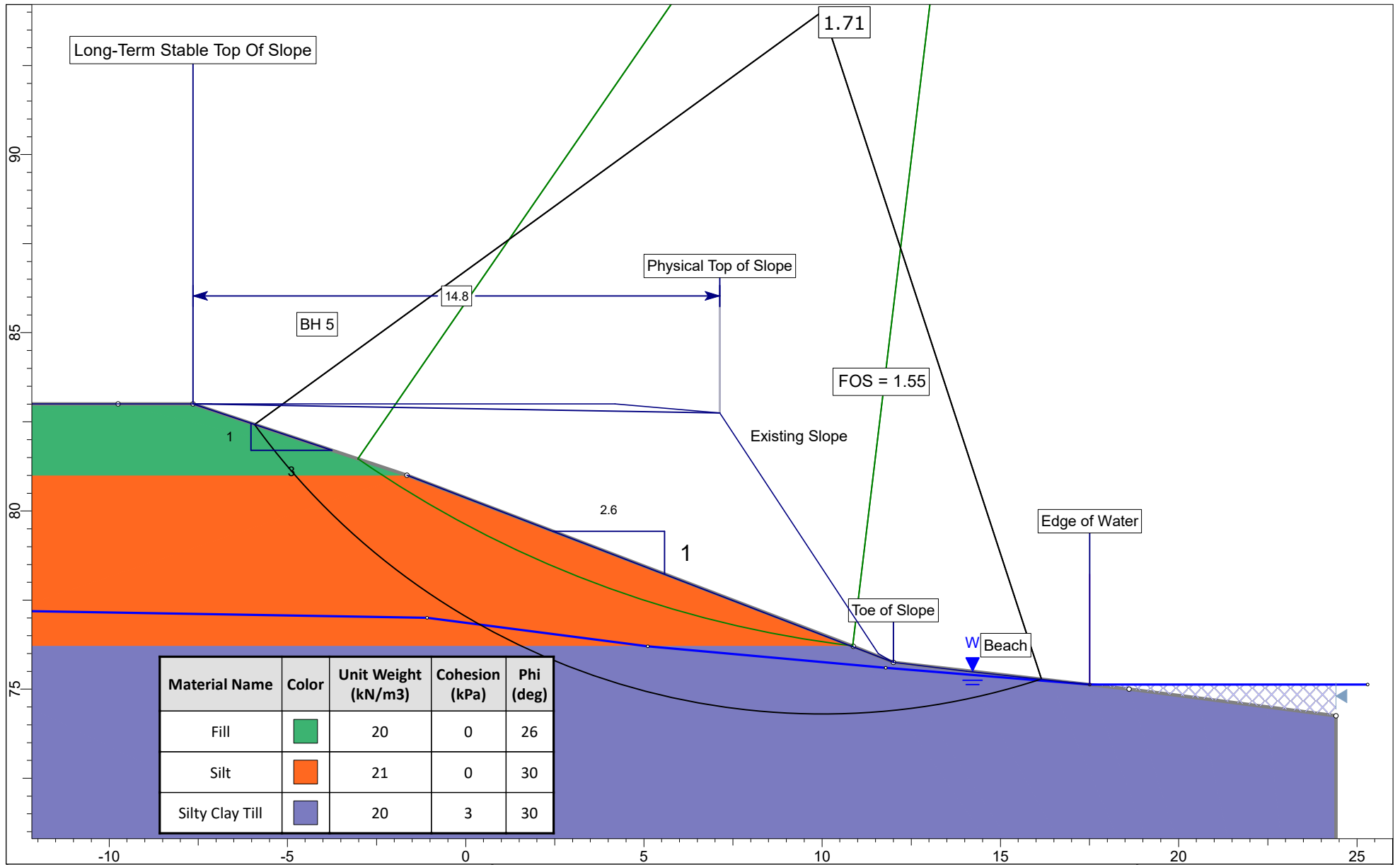


Material Name	Color	Unit Weight (kN/m ³)	Cohesion (kPa)	Phi (deg)
Fill	Green	20	0	26
Silt	Orange	21	0	30
Silty Clay Till	Purple	20	3	30

 Soil Engineers Ltd. CONSULTING ENGINEERS GEOTECHNICAL ENVIRONMENTAL HYDROGEOLOGICAL BUILDING SCIENCE <small>90 WEST BEAVER CREEK ROAD, SUITE #100, RICHMOND HILL, ONTARIO L4B 1E7 · TEL: (416) 754-8515 · FAX: (905) 881-8335</small>	Project Title		Slope Stability Analysis		Load Case	Existing Condition A-A	
	Location		165 Lake Street, Town of Grimsby				
	Drawn By	D.Y.	Checked By	K.L.	Scale	1:150	Revision
	Date	June 2022		Reference No.	2201-S023		Drawing No.

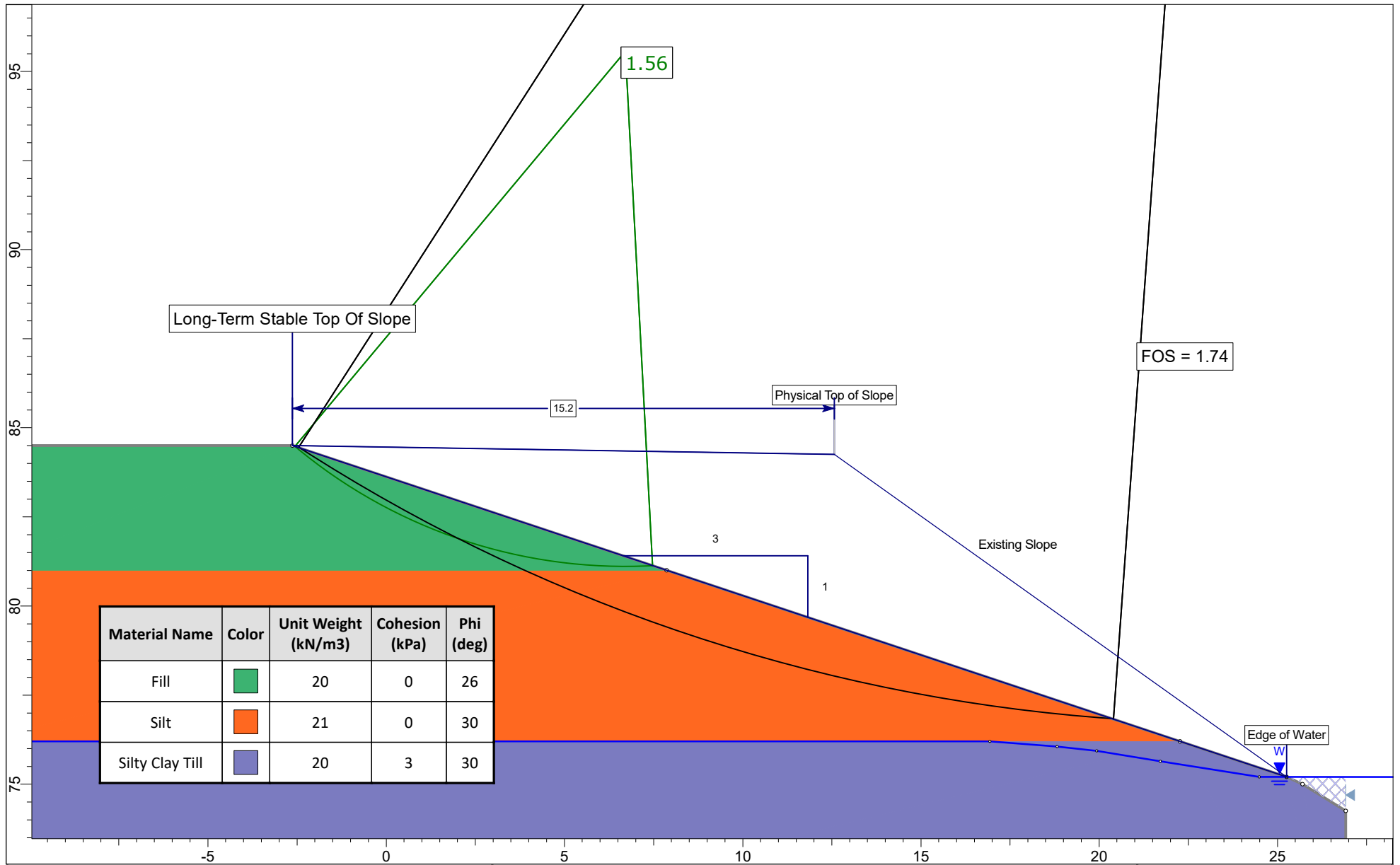


Material Name	Color	Unit Weight (kN/m ³)	Cohesion (kPa)	Phi (deg)
Fill	Green	20	0	26
Silt	Orange	21	0	30
Silty Clay Till	Blue	20	3	30



Soil Engineers Ltd.
 CONSULTING ENGINEERS
 GEOTECHNICAL | ENVIRONMENTAL | HYDROGEOLOGICAL | BUILDING SCIENCE
 90 WEST BEAVER CREEK ROAD, SUITE #100, RICHMOND HILL, ONTARIO L4B 1E7 · TEL: (416) 754-8515 · FAX: (905) 881-8335

Project Title		Slope Stability Analysis		Load Case		Stable Condition A-A	
Location		165 Lake Street, Town of Grimsby					
Drawn By	D.Y.	Checked By	K.L.	Scale	1:150		Revision
Date	June 2022		Reference No.	2201-S023		Drawing No.	5

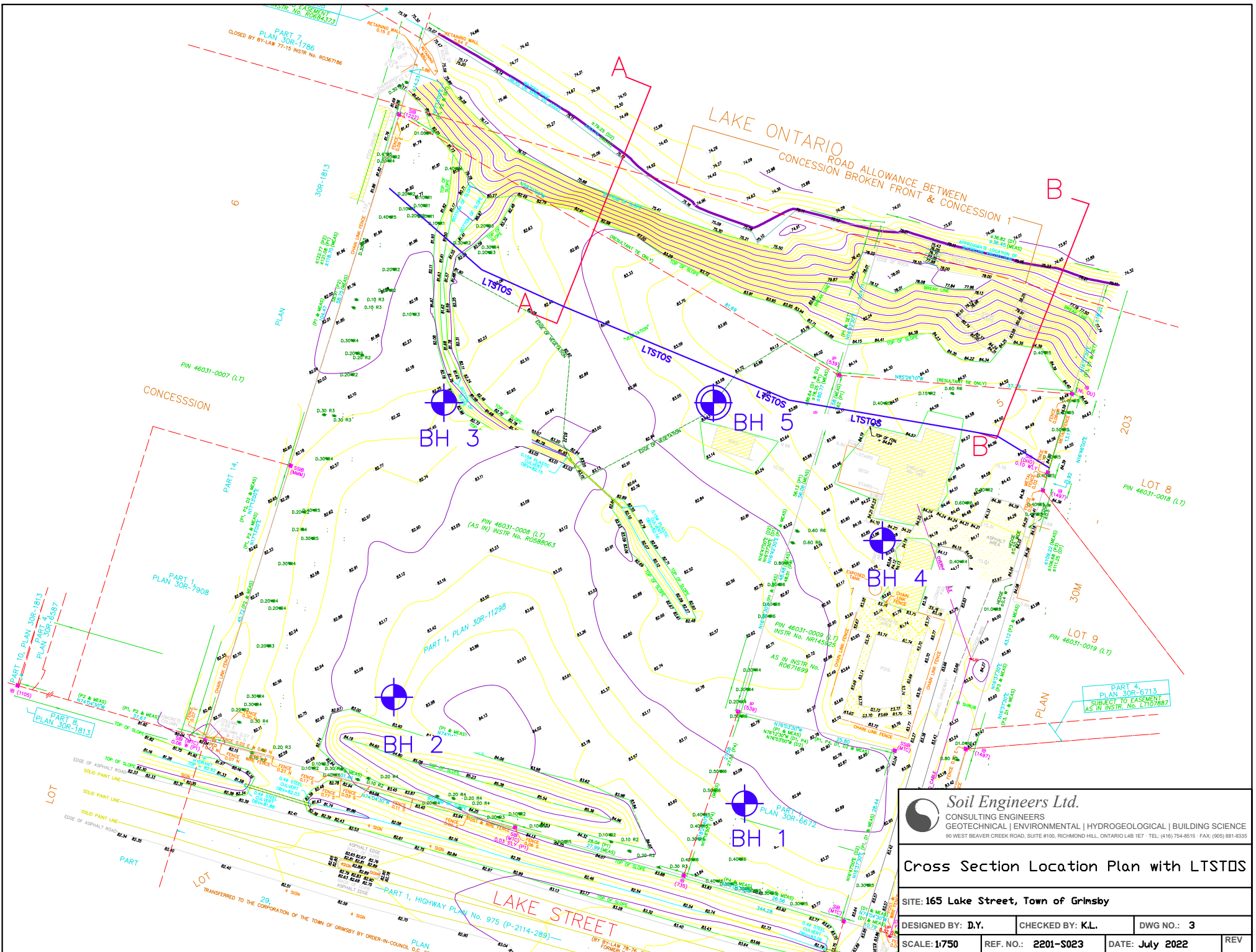


Material Name	Color	Unit Weight (kN/m ³)	Cohesion (kPa)	Phi (deg)
Fill	Green	20	0	26
Silt	Orange	21	0	30
Silty Clay Till	Purple	20	3	30



Soil Engineers Ltd.
 CONSULTING ENGINEERS
 GEOTECHNICAL | ENVIRONMENTAL | HYDROGEOLOGICAL | BUILDING SCIENCE
 90 WEST BEAVER CREEK ROAD, SUITE #100, RICHMOND HILL, ONTARIO L4B 1E7 · TEL: (416) 754-8515 · FAX: (905) 881-8335

Project Title		Slope Stability Analysis		Load Case		Stable Condition B-B	
Location		165 Lake Street, Town of Grimsby					
Drawn By	D.Y.	Checked By	K.L.	Scale	1:150		Revision
Date	June 2022		Reference No.	2201-S023		Drawing No.	6




Soil Engineers Ltd.
 CONSULTING ENGINEERS
 GEOTECHNICAL | ENVIRONMENTAL | HYDROGEOLOGICAL | BUILDING SCIENCE
 90 WEST BEAVER CREEK ROAD, SUITE #100, RICHMOND HILL, ONTARIO L4B 1E7 TEL: (416) 754-8515 FAX: (905) 881-6335

Cross Section Location Plan with LTSTOS

SITE: 165 Lake Street, Town of Grimsby

DESIGNED BY: D.Y.	CHECKED BY: K.L.	DWG NO.: 3
SCALE: 1:750	REF. NO.: 2201-S023	DATE: July 2022
		REV