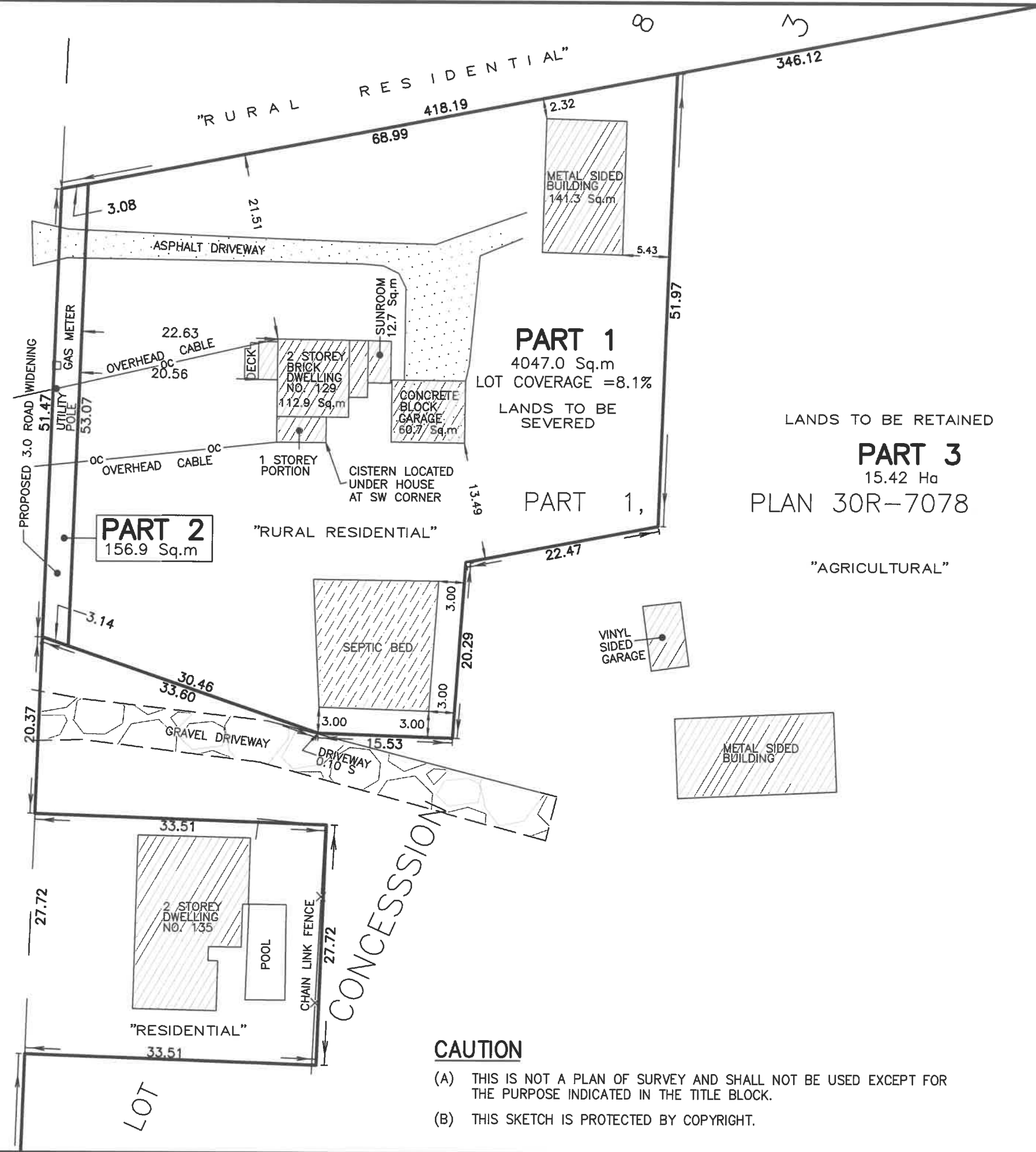
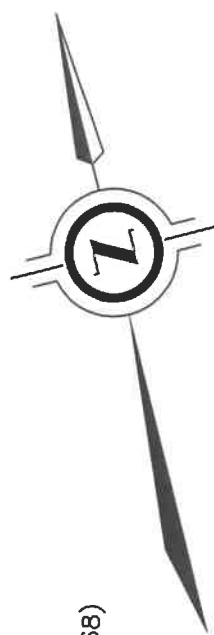


MOUNTAIN ROAD (BY BY-LAW 1013, INSTR. NO. R090568)
 (ROAD ALLOWANCE BETWEEN LOTS 8 & 9)
 REGIONAL ROAD NO. 12



CAUTION
 (A) THIS IS NOT A PLAN OF SURVEY AND SHALL NOT BE USED EXCEPT FOR THE PURPOSE INDICATED IN THE TITLE BLOCK.
 (B) THIS SKETCH IS PROTECTED BY COPYRIGHT.

NOTE: THIS SKETCH IS NOT A PLAN OF SURVEY

SKETCH FOR PLANNING PURPOSES ONLY

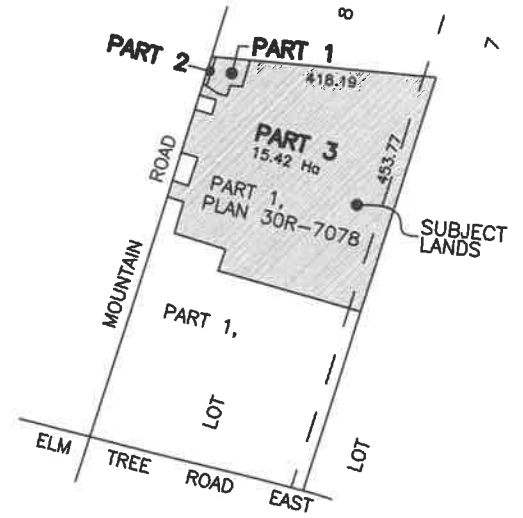
129 MOUNTAIN ROAD
TOWN OF GRIMSBY
 REGIONAL MUNICIPALITY OF NIAGARA
 SCALE 1 : 500



J.D. BARNES LIMITED
 © COPYRIGHT 2024

METRIC NOTE
 DISTANCES SHOWN ON THIS PLAN ARE IN METRES AND CAN BE CONVERTED TO FEET BY DIVIDING BY 0.3048

KEY PLAN (not to scale)



TOWN OF GRIMSBY

LEGAL DESCRIPTION

PART OF LOTS 7 & 8, CONCESSION 3, GEOGRAPHIC TOWNSHIP OF NORTH GRIMSBY
 BOUNDARY INFORMATION HAS BEEN DERIVED FROM AVAILABLE RECORDS AND/OR FIELD MEASUREMENTS. THIS IS NOT A PLAN OF SURVEY.
 SOME FEATURES SHOWN ON THIS SKETCH HAVE BEEN DIGITIZED FROM AERIAL PHOTOGRAPHY - LOCATION IS APPROXIMATE.

FEBRUARY 12, 2025
 DATE

[Signature]
 DASHA PAGE
 ONTARIO LAND SURVEYOR



J.D. BARNES LIMITED
 SURVEYING
 MAPPING
 GIS
 LAND INFORMATION SPECIALISTS
 4318 PORTAGE ROAD - UNIT 2, NIAGARA FALLS, ON L2E 6A4
 T: (905) 358-3693 F: (905) 358-6224 www.jdbarnes.com

TS	DRAWN
BM/DP	CHECKED
Ref. No. 23-16-370-00	