

NOTES BEARINGS ARE UTM GRID, DERIVED FROM GNSS OBSERVATIONS, UTM ZONE 17, NAD83 (GCS) (2011). DISTANCES ARE GROUND AND CAN BE CONVERTED TO GRID BY MULTIPLYING BY THE COMBINED SCALE FACTOR OF 0.999755. FOR BEARING COMPARISONS, A ROTATION OF 00°56'30" COUNTER-CLOCKWISE WAS APPLIED TO BEARINGS ON P1, P2, P3, P4, P5, P6, P7, P8, P9 AND P10.

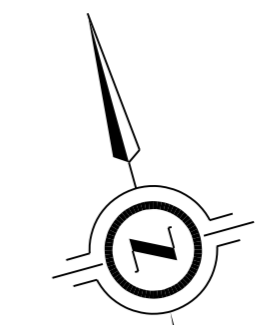
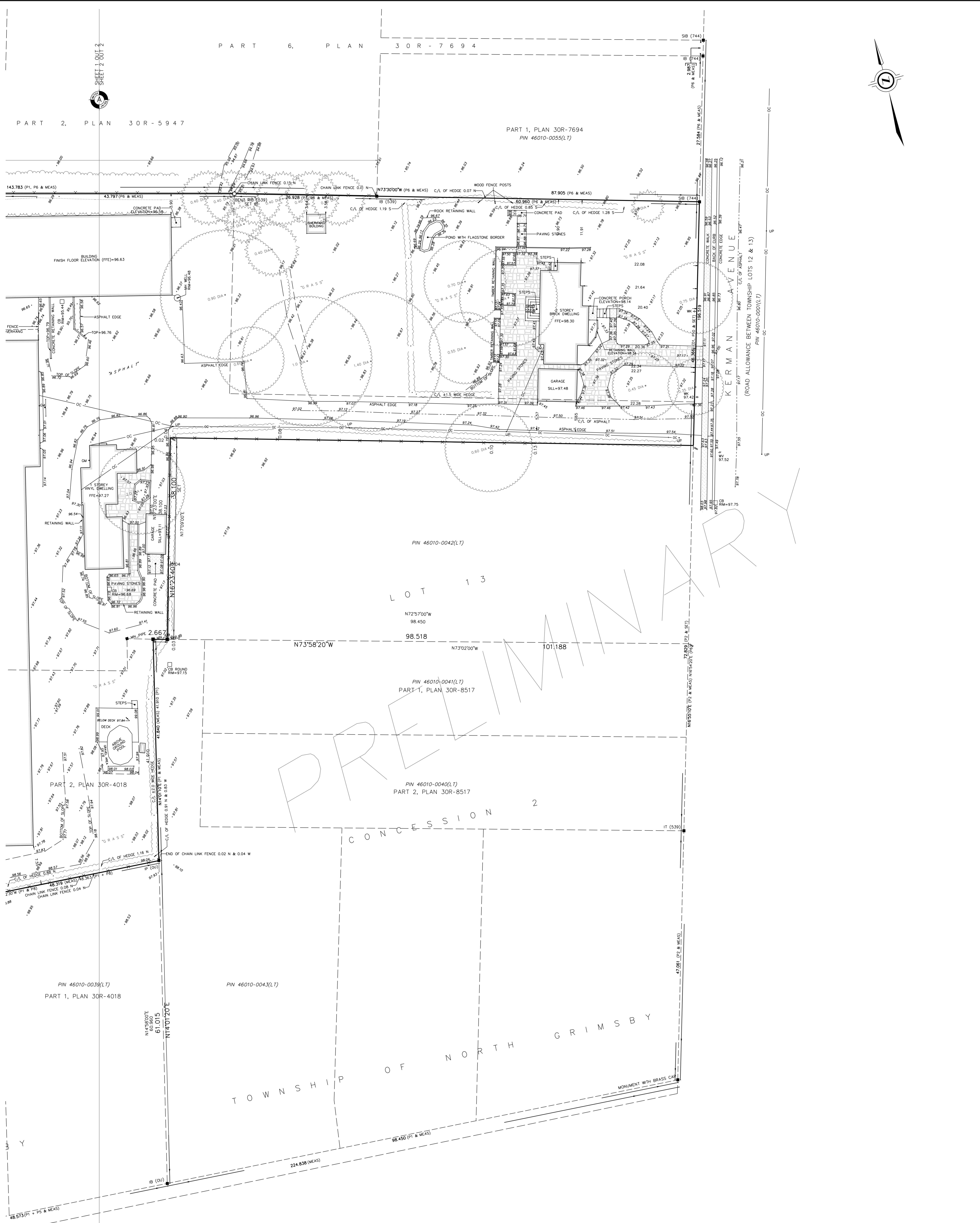
PART 2 - SURVEY REPORT DESCRIPTION PART OF LOT 13, CONCESSION 2, GEOGRAPHIC TOWNSHIP OF NORTH GRIMSBY - REGISTERED EASEMENTS AND/OR RIGHTS-OF-WAY SUBJECT TO EASEMENT IN FAVOUR OF PIN 46010-0095(LT) OVER PARTS 2&4 ON PLAN 30R-1074 AS IN INST. NO. H0783167 - BOUNDARY FEATURES FENCES, HEDGES, RETAINING WALLS AND BUILDINGS AS SHOWN ON PLAN - ZONING COMPLIANCE NOT VERIFIED BY THIS SURVEY - ADDITIONAL REMARKS PLAN PREPARED FOR TARBUIT CONSTRUCTION LIMITED

ELEVATION NOTE ELEVATIONS ARE OF GEODETIC ORIGIN (CGVD-1928-78), AND ARE DERIVED FROM GNSS OBSERVATIONS AND NATURAL RESOURCES CANADA'S GEOD MODEL HT2.0.

TOPOGRAPHIC LEGEND table with symbols for catchbasin, manhole, manhole junction box, gas valve, bollard, utility pole, light standard, transfer signal, telephone pedestal, cable TV pedestal, fire hydrant, water valve, centerline, overhead cable, fence, coniferous tree, deciduous tree.

LEGEND table with symbols for survey monument found, survey monument set, standard iron bar, short standard iron bar, round iron bar, iron bar, iron pipe, cut cross, concrete pin and washer, plastic bar, witness, plan 30R-4018, plan 30R-8517, plan 30R-290, plan 30R-1074, plan 30R-3507, plan 30R-7894, plan of survey by D. G. Urc. O.L.S. (FILE: 61087), plan 30R-5440, plan 30R-5440, J.D. Barnes Limited, KERRY T. HOME, O.L.S., MATTHEW CAMERON HEYWOOD-KERRY T. HOME SURVEYING LTD., E. EDMUNDS, O.L.S., B. JACOBS, O.L.S., DENOTES PROPERTY LINE.

N=NORTH / S=SOUTH / E=EAST / W=WEST ALL SET SSB AND PB MONUMENTS WERE USED DUE TO LACK OF OVERBURDEN AND/OR PROXIMITY OF UNDERGROUND UTILITIES IN ACCORDANCE WITH SECTION 11 (4) OF O.R.C. 525/91.



SURVEYOR'S CERTIFICATE I CERTIFY THAT: 1. THIS SURVEY AND PLAN ARE CORRECT AND IN ACCORDANCE WITH THE SURVEY ACT, THE SURVEYORS ACT AND THE REGULATIONS MADE UNDER THEM. 2. THE SURVEY WAS COMPLETED ON

DATE DASHA PAGE THIS PLAN IS NOT VALID UNLESS EMBOSSED BY A SURVEYOR'S SEAL

SHEET 2 OF 2 J.D. BARNES SURVEYING LIMITED GIS LAND INFORMATION SPECIALISTS 4118 PORTAGE ROAD, UNIT 2, NIAGARA FALLS, ON L2E 6A4 T: (905) 538-3603 F: (905) 338-4224 www.jdbarnes.com DRAWN BY: DR CHECKED BY: AJH REFERENCE NO: 19-16-414-00 FILE: C:\2019\19-16-414\00\Drawings\19-16-414-00\SPR(TOP).dgn PLOTTED: 12/24/2019