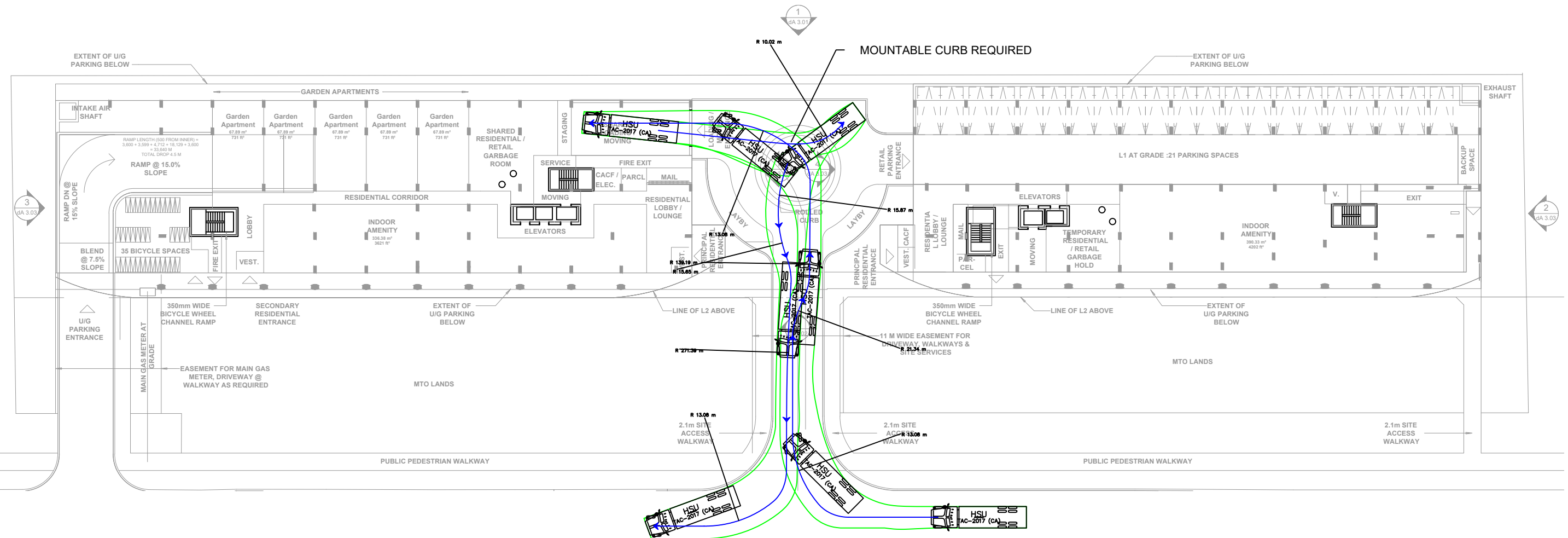


LEVEL 1



THIS AUTOTURN SWEEP PATH ANALYSIS HAS BEEN PREPARED USING BASE PLANS PROVIDED BY OTHERS. THE PRACTITIONER HAS NOT INSPECTED THE ACCURACY AND/OR THE COMPLETENESS OF THESE BASE PLANS AND SHALL NOT BE RESPONSIBLE FOR ANY ERRORS OR OMISSIONS WHICH MAY BE INCORPORATED HEREIN AS A RESULT.

NO.	DATE	INITIAL	REVISION DETAIL

DESIGN VEHICLE:

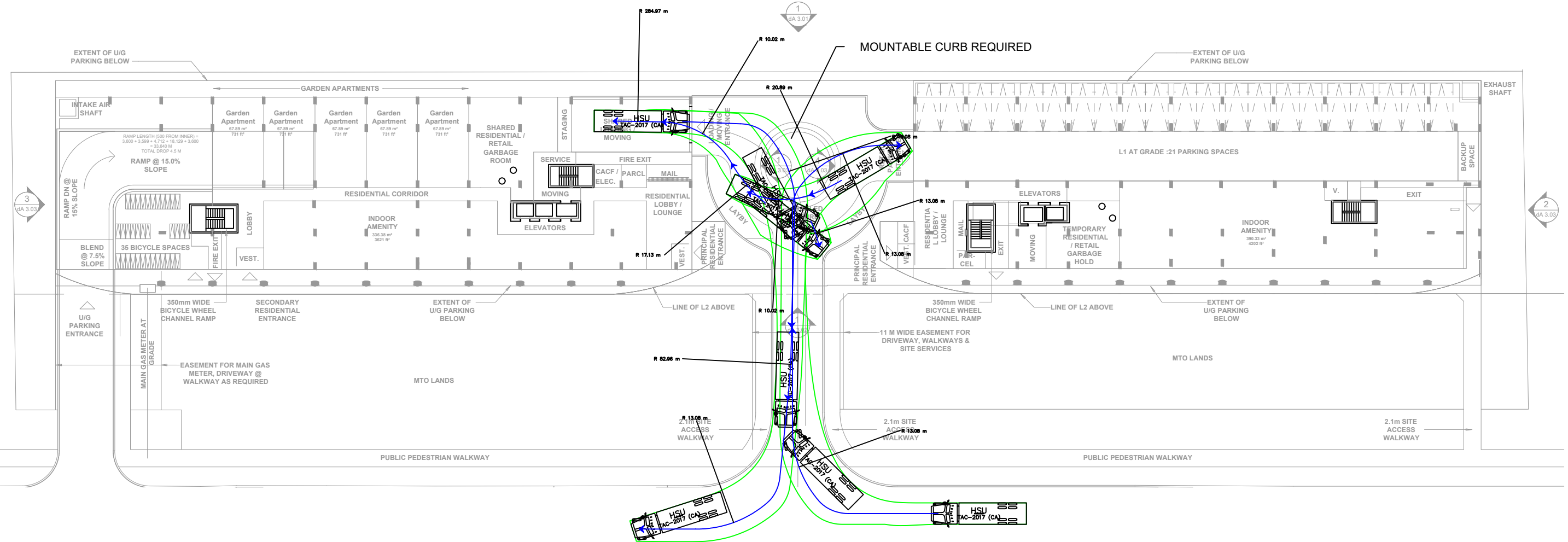
HSU

Width : 2.60
Track : 2.60
Lock to Lock Time : 6.0
Steering Angle : 40.0

**AUTOTURN ASSESSMENT
544 NORTH SERVICE ROAD
GRIMSBY, ON**

	PROJECT NO.: 230410	DATE: AUG 2023	SCALE: 1:500	DRAWING NO.: 01
	DRAWN: LC	DESIGN: LC	CHECK: SC	

LEVEL 1



THIS AUTOTURN SWEEP PATH ANALYSIS HAS BEEN PREPARED USING BASE PLANS PROVIDED BY OTHERS. THE PRACTITIONER HAS NOT INSPECTED THE ACCURACY AND/OR THE COMPLETENESS OF THESE BASE PLANS AND SHALL NOT BE RESPONSIBLE FOR ANY ERRORS OR OMISSIONS WHICH MAY BE INCORPORATED HEREIN AS A RESULT.

NO.	DATE	INITIAL	REVISION DETAIL

DESIGN VEHICLE:

HSU

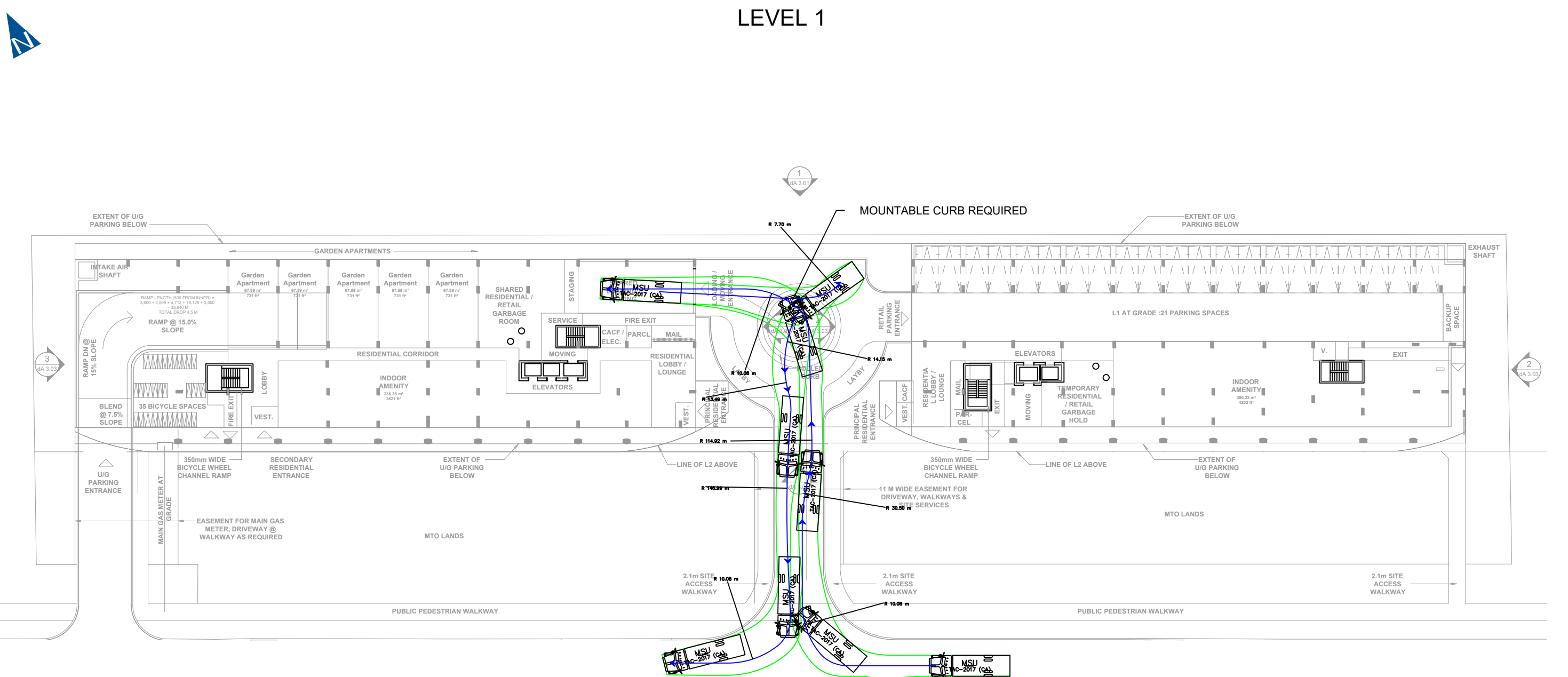
meters

- Width : 2.60
- Track : 2.60
- Lock to Lock Time : 6.0
- Steering Angle : 40.0

AUTOTURN ASSESSMENT 544 NORTH SERVICE ROAD GRIMSBY, ON

	PROJECT NO.: 230410	DATE: AUG 2023	SCALE: 1:500	DRAWING NO.: 02
	DRAWN: LC	DESIGN: LC	CHECK: SC	

LEVEL 1



THIS AUTOTURN SWEEP PATH ANALYSIS HAS BEEN PREPARED USING BASE PLANS PROVIDED BY OTHERS. THE PRACTITIONER HAS NOT INSPECTED THE ACCURACY AND/OR THE COMPLETENESS OF THESE BASE PLANS AND SHALL NOT BE RESPONSIBLE FOR ANY ERRORS OR OMISSIONS WHICH MAY BE INCORPORATED HEREIN AS A RESULT.

NO.	DATE	INITIAL	REVISION DETAIL

DESIGN VEHICLE:

MSU

meters

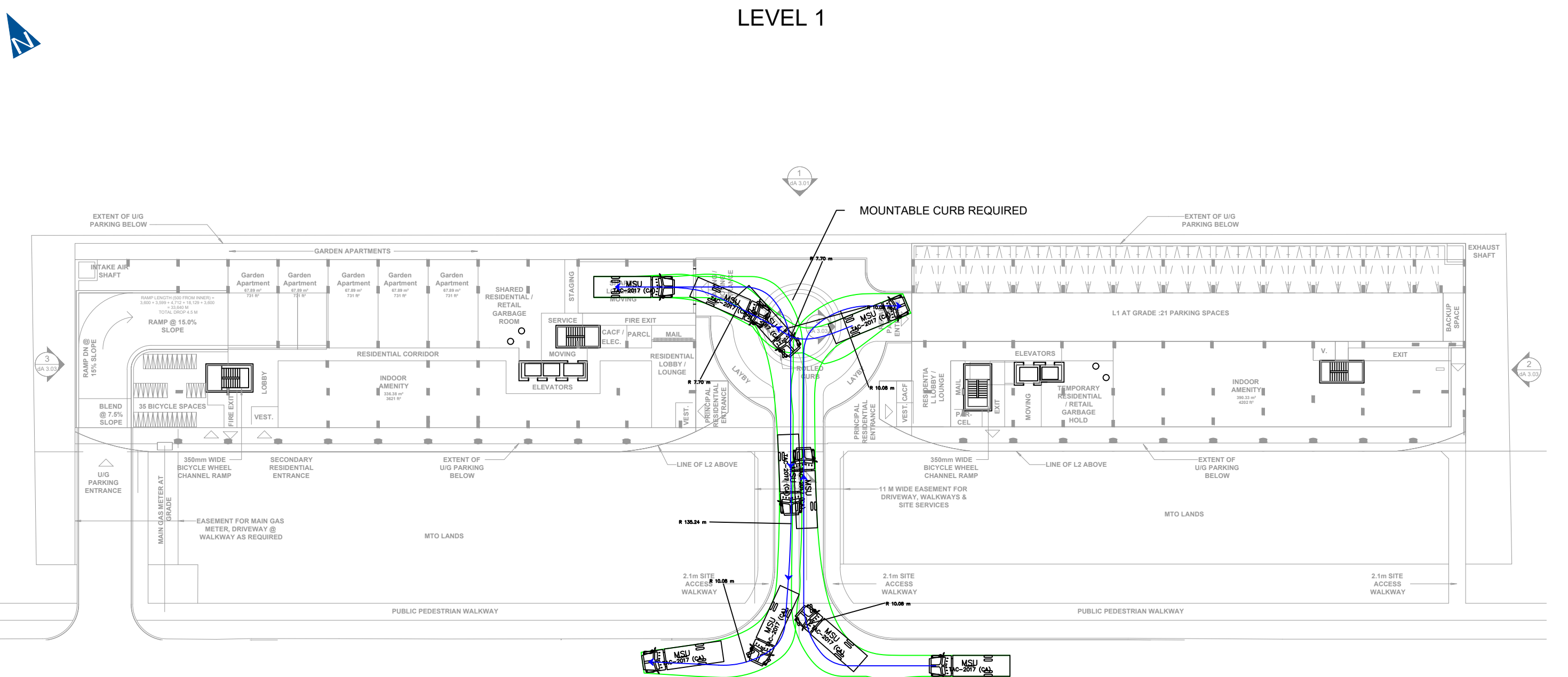
- Width : 2.60
- Track : 2.60
- Lock to Lock Time : 6.0
- Steering Angle : 40.2

AUTOTURN ASSESSMENT 544 NORTH SERVICE ROAD GRIMSBY, ON



PROJECT NO.: 230410	DATE: AUG 2023	SCALE: 1:500	DRAWING NO.: 03
DRAWN: LC	DESIGN: LC	CHECK: SC	

LEVEL 1



THIS AUTOTURN SWEEP PATH ANALYSIS HAS BEEN PREPARED USING BASE PLANS PROVIDED BY OTHERS. THE PRACTITIONER HAS NOT INSPECTED THE ACCURACY AND/OR THE COMPLETENESS OF THESE BASE PLANS AND SHALL NOT BE RESPONSIBLE FOR ANY ERRORS OR OMISSIONS WHICH MAY BE INCORPORATED HEREIN AS A RESULT.

NO.	DATE	INITIAL	REVISION DETAIL

DESIGN VEHICLE:

MSU

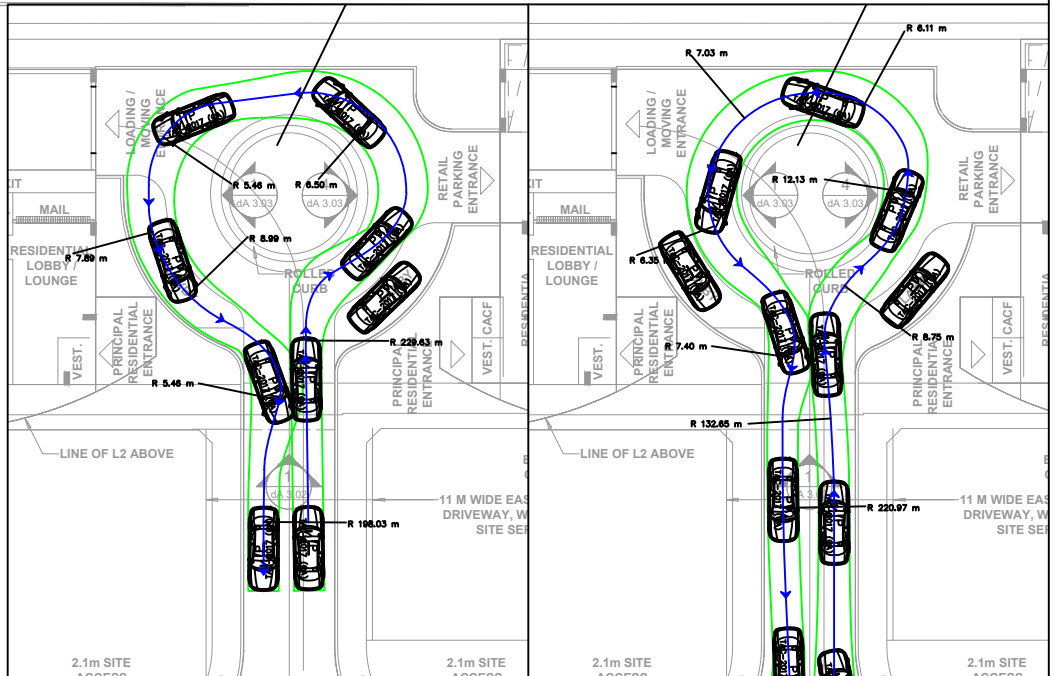
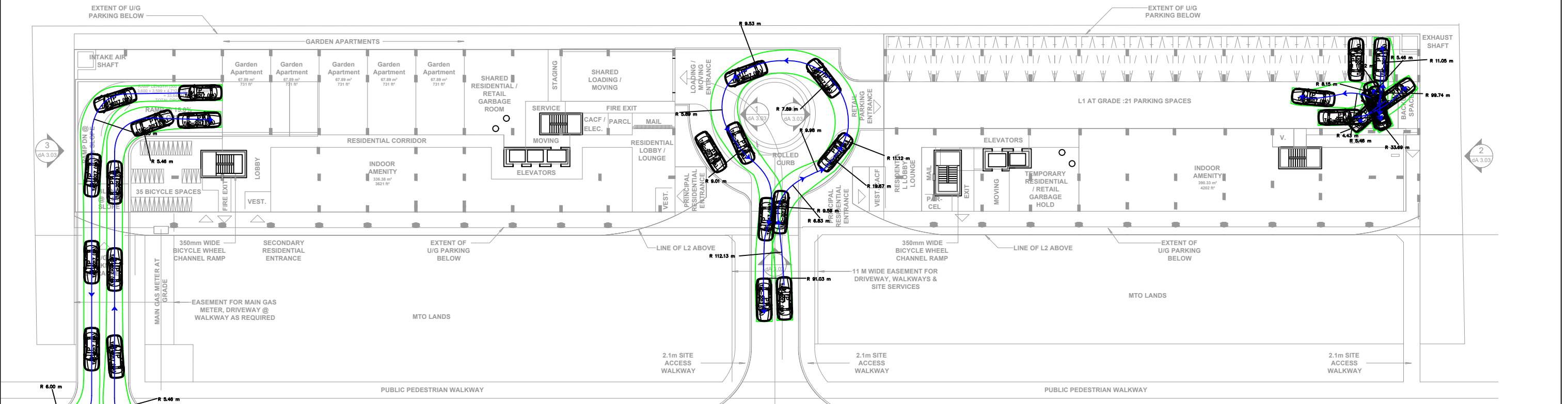
meters

- Width : 2.60
- Track : 2.60
- Lock to Lock Time : 6.0
- Steering Angle : 40.2

AUTOTURN ASSESSMENT 544 NORTH SERVICE ROAD GRIMSBY, ON

PROJECT NO.: 230410	DATE: AUG 2023	SCALE: 1:500	DRAWING NO.: 04
DRAWN: LC	DESIGN: LC	CHECK: SC	

LEVEL 1



THIS AUTOTURN SWEEP PATH ANALYSIS HAS BEEN PREPARED USING BASE PLANS PROVIDED BY OTHERS. THE PRACTITIONER HAS NOT INSPECTED THE ACCURACY AND/OR THE COMPLETENESS OF THESE BASE PLANS AND SHALL NOT BE RESPONSIBLE FOR ANY ERRORS OR OMISSIONS WHICH MAY BE INCORPORATED HEREIN AS A RESULT.

NO.	DATE	INITIAL	REVISION DETAIL

DESIGN VEHICLE:

P

Width : 2.00 meters
 Track : 2.00
 Lock to Lock Time : 6.0
 Steering Angle : 35.9

AUTOTURN ASSESSMENT 544 NORTH SERVICE ROAD GRIMSBY, ON



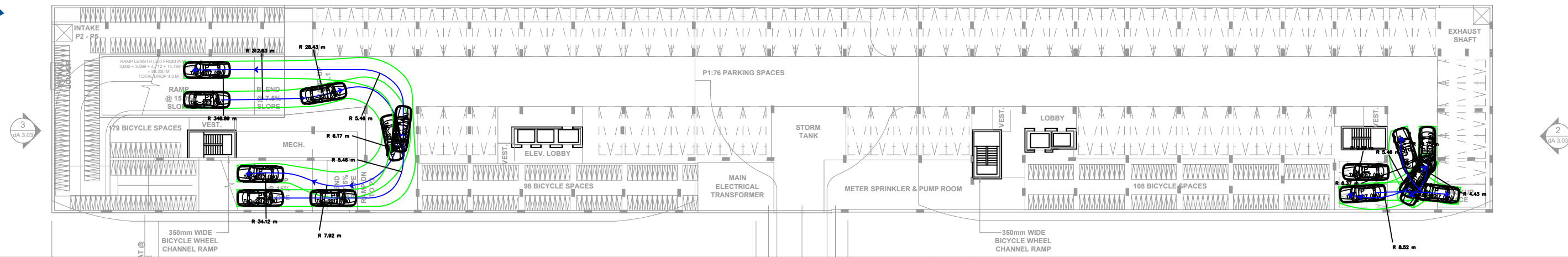
PROJECT NO.: 230410
DRAWN: LC

DATE: AUG 2023
DESIGN: LC

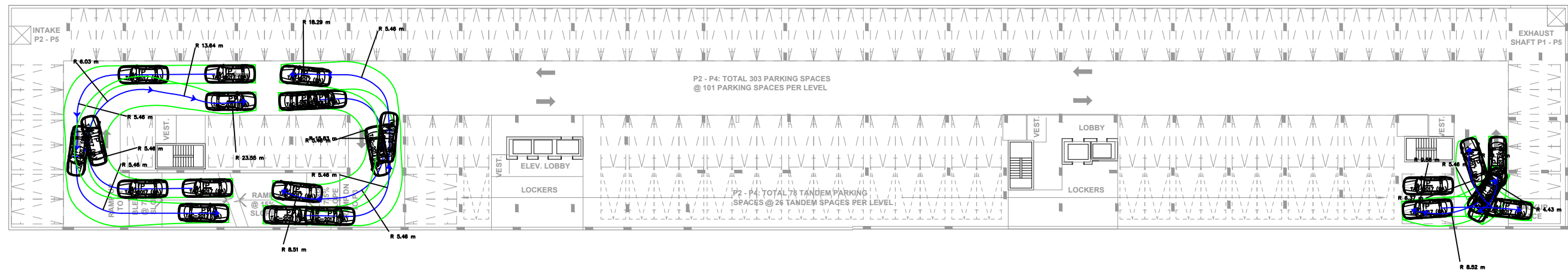
SCALE: 1:500
CHECK: SC

DRAWING NO.:
05

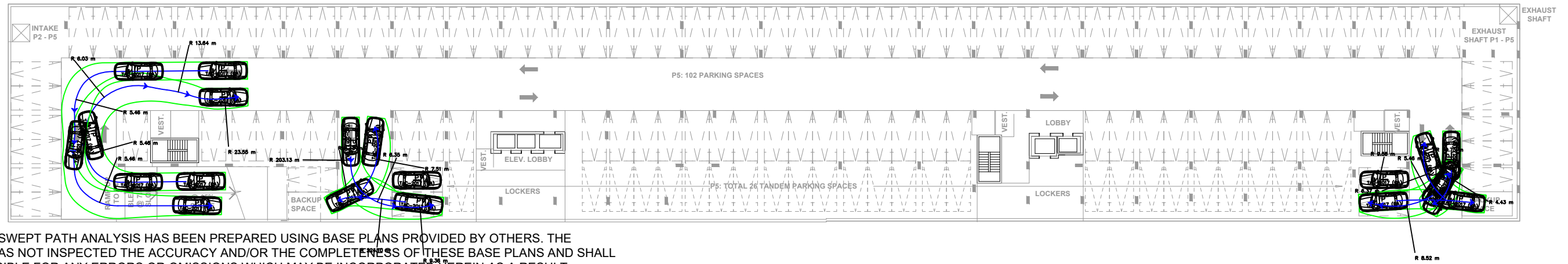
LEVEL P1



LEVEL P2-P4



LEVEL P5



THIS AUTOTURN SWEEP PATH ANALYSIS HAS BEEN PREPARED USING BASE PLANS PROVIDED BY OTHERS. THE PRACTITIONER HAS NOT INSPECTED THE ACCURACY AND/OR THE COMPLETENESS OF THESE BASE PLANS AND SHALL NOT BE RESPONSIBLE FOR ANY ERRORS OR OMISSIONS WHICH MAY BE INCORPORATED HEREIN AS A RESULT.

NO.	DATE	INITIAL	REVISION DETAIL

DESIGN VEHICLE:

P

Width : 2.00 meters
 Track : 2.00
 Lock to Lock Time : 6.0
 Steering Angle : 35.9

AUTOTURN ASSESSMENT 544 NORTH SERVICE ROAD GRIMSBY, ON



PROJECT NO.: 230410	DATE: AUG 2023	SCALE: 1:500	DRAWING NO.: 06
DRAWN: LC	DESIGN: LC	CHECK: SC	