

FIRE ROUTE PLAN

147 Main Street East
Grimsby, ON

- Proposed Fire Route
- Fire Lane (min. 6m wide)
- ▼ Main Entrance
- ↓ Secondary Entrance
- + Fire Hydrant Location
- ⊗ Fire Route Sign Location

*Siamese connection and alarm annunciator location to be determined at Site Plan stage.

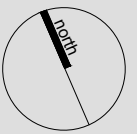
Notes:
• Site plan prepared by Chamberlain Architect Services Ltd.

DATE: July 22, 2020

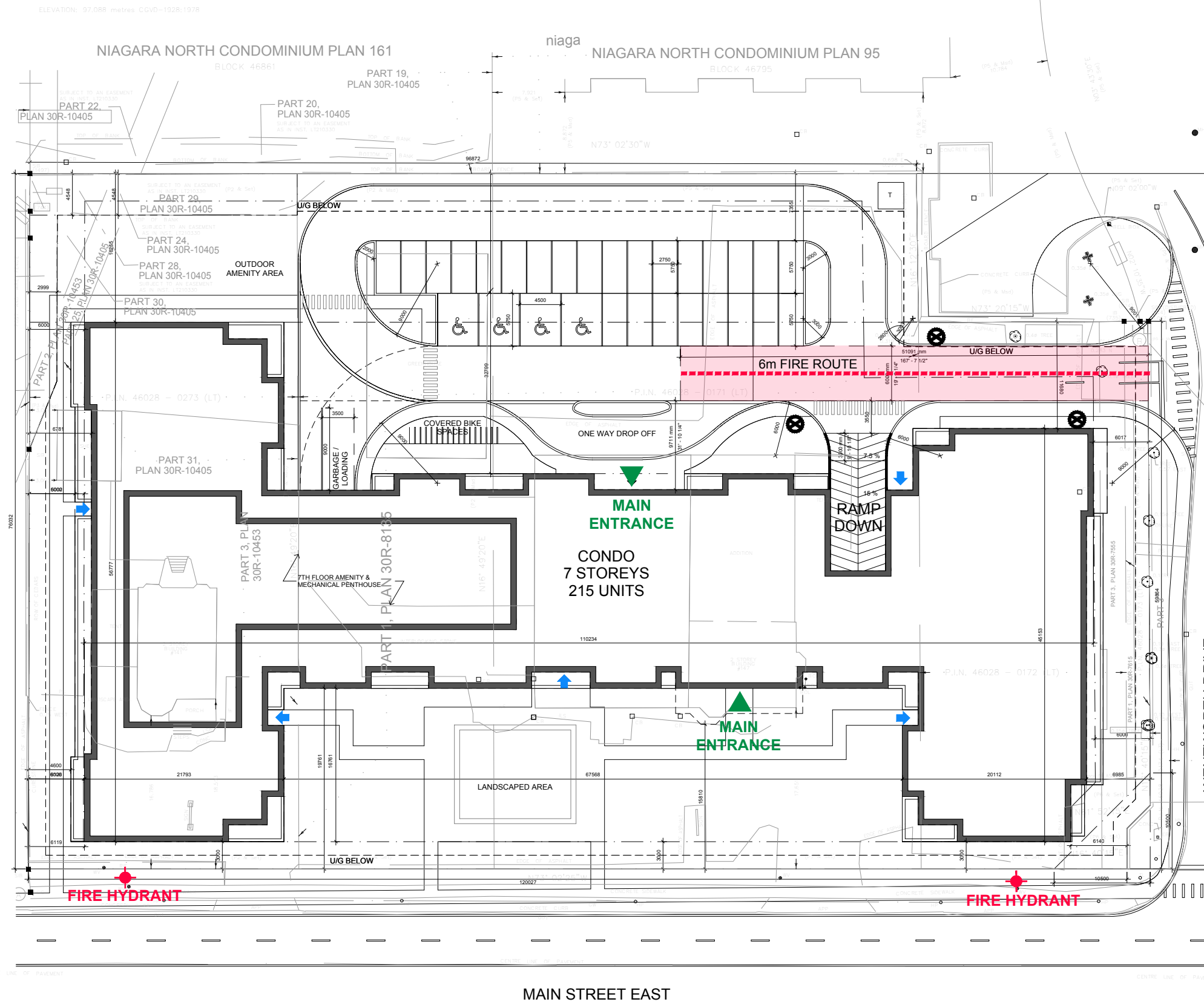
FILE: 14196BA

SCALE: 1:500

DRAWN: GC



K:14196BA-COLES GRIMSBY:SP:FIRE_ROUTE_PLAN_22JULY2020.DWG



MAIN STREET EAST